



PERFECTLY HIDDEN ENERGY



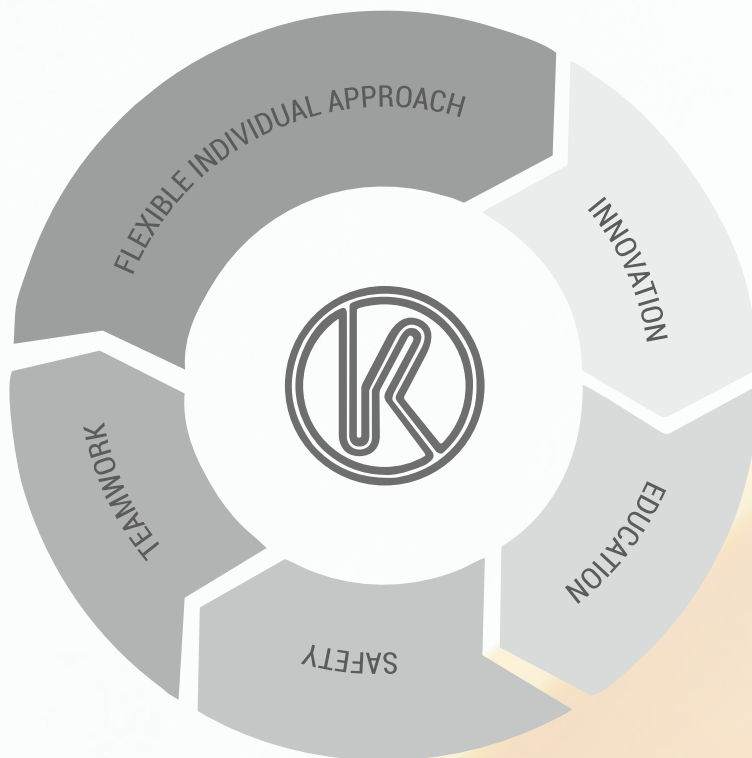
Boxes into hollow walls

You stand for our success.

New technologies guarantee the improvement and innovation of our products. For you.



COMPANY POLICY



INNOVATION

We continuously search for new ways leading to technology and products improvements.

FLEXIBLE AND INDIVIDUAL APPROACH

Our customers enjoy the complex service and their requirements are solved individually. We are building a strong and long-term business partnership.

RESPECT

We respect people as individualities. We pursue open dialogue and a common solutions. Gentleness and helpfulness promote good relationships.

TEAMWORK

We recognize the fact that each employee contributes to the company growth; only motivated and cooperating teams become successful and continuously achieve the goals.

EDUCATION

Expertise and skill enhancement are an integral part of the company strategy.

SAFETY

Environmental protection, occupational safety and health are a requirements embedded in all our company activities. We comply with the strict standards of ethics and work control.



ABOUT COMPANY

KOPOS KOLIN a.s. (KOPOS KOLIN Plc) currently produces more than 5,000 items. Our products include wiring boxes, trunkings, parapet trunkings, pipes, double wall protector conduits (business mark KOPOFLEX® and KOPODUR® system), divided cable duct KOPOHALF®, and cable management systems. The company also produces environment-friendly products, for example plastic products from halogen-free and lead-free materials. Respecting the increasing demand for building safety we developed the systems with maintained functionality in fire. The first fire resistance test was conducted in 2009. The company also uses the technology for the production of shading blocks NEUTROSTOP, the product able to protect the environment from neutron radiation.

The Czech and worldwide increasing market demands motivate us to expand our business to the other countries. KOPOS products are now produced in two locations, in Kolin and Zhitomir Region in Ukraine. The company also develops foreign business activities and consolidates its market position in other parts of the world such as Lithuania, Latvia, Estonia, Denmark, France, Benelux, the United Kingdom, Sweden, Norway or the United Arab Emirates. KOPOS KOLIN a.s. employs more than 400 people, and other 170 in 11 subsidiaries. We recognize the fact that the employees of the company are the key to the success of the KOPOS brand. Generations of our employees work in various functional areas of our company.



New generation of wiring boxes

into hollow walls and flammable materials

KOPOS launches a new line of instrumental boxes into hollow walls. These double injection boxes are produced in high quality thanks to a modern production equipment. The main advantages are soft membrane inputs, which replaced the classical breakout inputs. Flexible membranes perfectly and permanently seal installed cables and wiring pipes. These boxes are appropriate for installations into low energy buildings and passive houses. Flexible membrane design prevents the undesirable airflow within the building constructions. A part of each box are mounted instrument and mounting screws with double-tapped thread for quick installation. The plastic fixation clamp, which replaced the metal clamp from previous generation, ensures fixation

of the box in the drilled hole. The new design ensures that the mounting clamp holds in the groove during the whole installation. We can achieve a more solid and accurate fixation thanks to a high quality plastic material with glass fiber additive. The boxes are designed with an extended edge for easier installation and higher stability in a base material. Four edge extensions help with the box stability in unaccurate holes. All boxes are produced and certified according to the applicable standards and are suitable for installation into flammable materials with classification to fire A1 – F.



SKLD 2

Universal connecting pin for the boxes KUL 68-45/LD and KPRL 68-70/LD. Connected boxes enable instrument assembly into composite frames. The packaging serves as well as a gauge for the boxes pitch and a gauge for the cables cross-section. When connecting boxes we create a space for instrument installation in composite frames (2-5 pcs). We can connect even boxes with different depth, which enables the assembly of instruments with a different depth.





mounted instrument
screws are hidden
under the edge of the box

Can be ordered
separately
as **3X20V-2CH_ZNCR**.

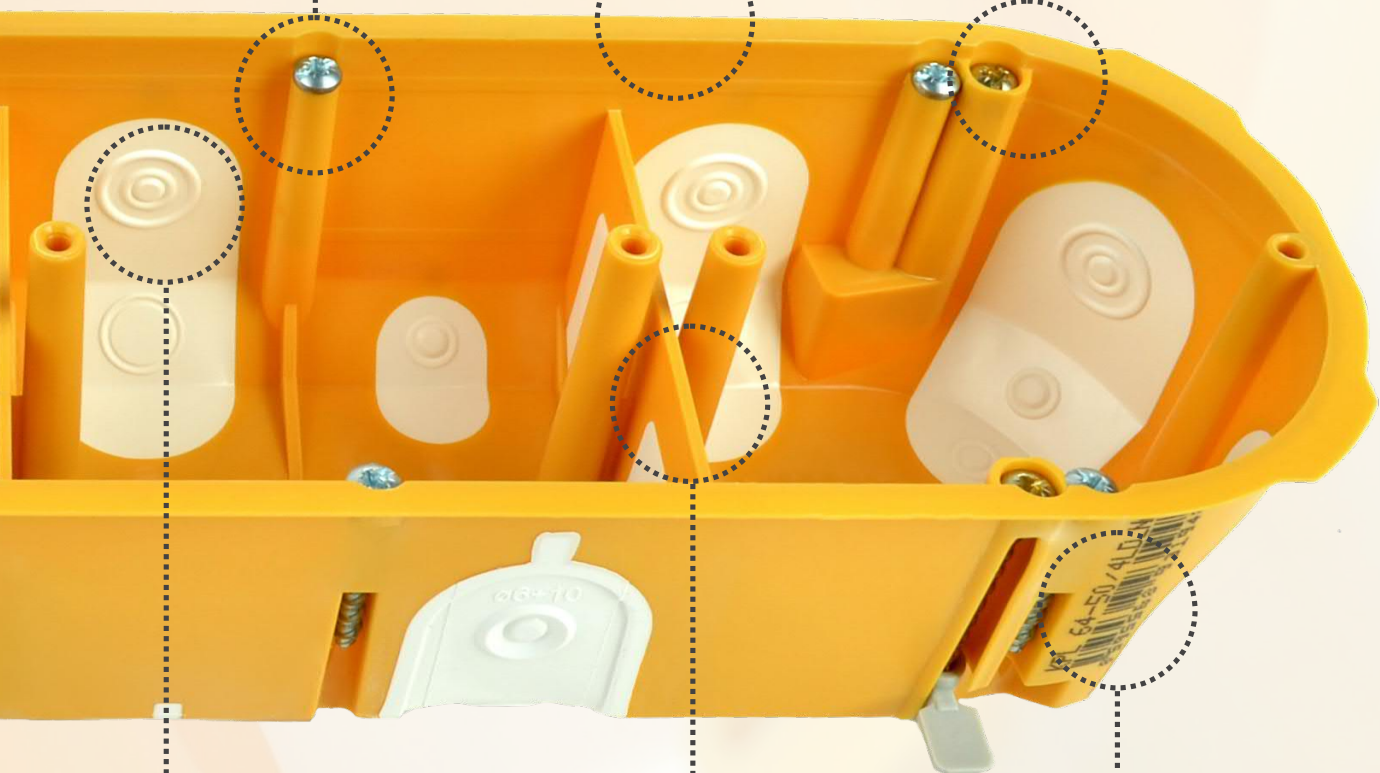


extended edge
for more stable
support



mounting screws
for box installation
into hollow walls

Can be ordered
separately
as **3X35V-2CH_ZNCR**.



combined sealed
cable and pipe inlets



sealed bulkheads
protected by
an industrial patent



EAN code



boxes into hollow walls





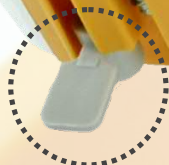
ASSEMBLY
INSTRUCTIONS
KUL 68-45/LD
a KPRL 68-70/LD



ASSEMBLY
INSTRUCTIONS
KPL 64-50/2LD_NA



ASSEMBLY
INSTRUCTIONS
KPL 64-50/3LD_NA



rigid plastic mounting
foot with glass fiber

Can be ordered
separately
as **PATKA CR_KA**.



columns for horizontal
instrument installation



pins for
indicating
the drilling
points



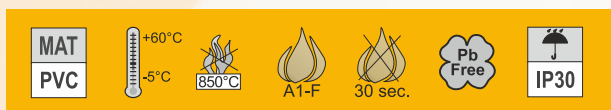
KUL 68-45/LD_NA



Basic universal box equipped with a tripple instrument column. The double socket can be mounted in. The box can be multiplied by interconnecting with connecting pin SKLD 2 with the pitch 71 mm. The box is designed with extended edge, removable on the interface while connected together.



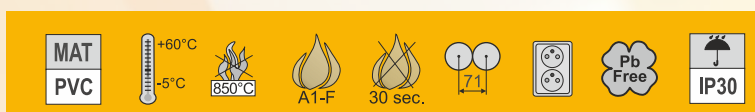
KUL 68-45/LD2_NA



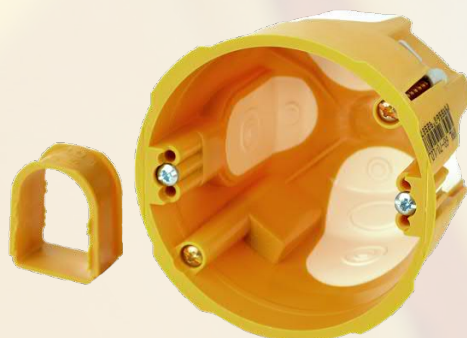
A set of box and a cover can be used as a junction box even it's a classic instrumental box. The cover is fixed with screws. Screws are a part of the packaging.



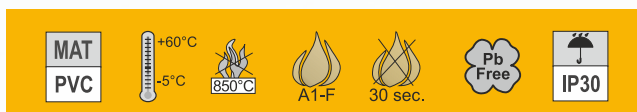
KPRL 68-70/LD_NA



The greatest advantage of this box is it's depth of 70 mm. The depth gives enough space for modern electrical appliances. We can install sockets with the overvoltage protection, timer, dimmer and many other instruments. There is more space to do even larger clamping under the classic instruments thanks to box depth. The boxes can be connected together (with the pitch 71 mm) by connecting pins, which are a part of the packaging.



KPL 64-45/LD_NA



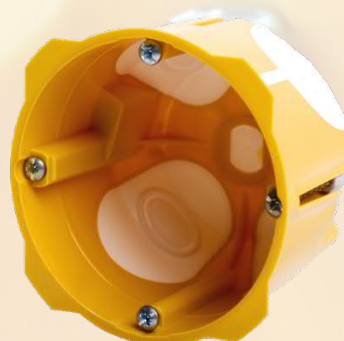
Basic instrument box with the outer diameter 68 mm.
The depth 45 mm enables enough space for regular installations.



KPL 64-50/LD_NA



Basic instrument box with the outer diameter 68 mm.
The depth 50 mm enables enough space for regular installations.



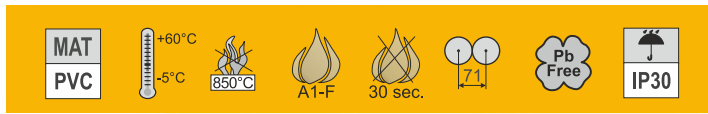
KPRL 64-60/LD_NA



This deeper instrument box 60 mm enables installation of modern electrical appliances such as overvoltage protection sockets, timers, dimmers and other devices that have higher demands on assembly space or for larger clamping under the standard size appliance.



KPL 64-50/2LD_NA

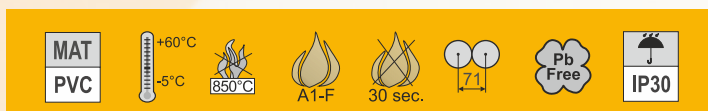


Wiring box into hollow walls for direct mounting of two instruments into one frame.

The box is equipped with a partition wall protected by an industrial patent. There are pins on the outer shell of the box for marking centre of installation hole drilling. These features are common for double, triple and quadruple boxes.



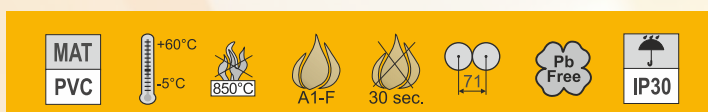
KPL 64-50/3LD_NA



Wiring box for mounting of three instruments into one frame. Simple design enables easy installation.



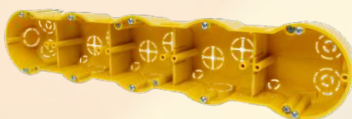
KPL 64-50/4LD_NA



Wiring box for mounting of four instruments into one frame. Simple design makes the installation even easier.

KP 64/5L_NA

Five-fold box produced by single-injection technology.



We determine the trend in the development of the wiring material.



ABOUT COMPANY
KOPOS KOLÍN a.s.

PERFECTLY HIDDEN ENERGY

www.kopos.com

KOPOS KOLÍN a.s.
Havlíčková 432
280 94 Kolín IV
Czech republic

tel.: +420 321 730 111
e-mail: kopos@kopos.cz
www.kopos.cz