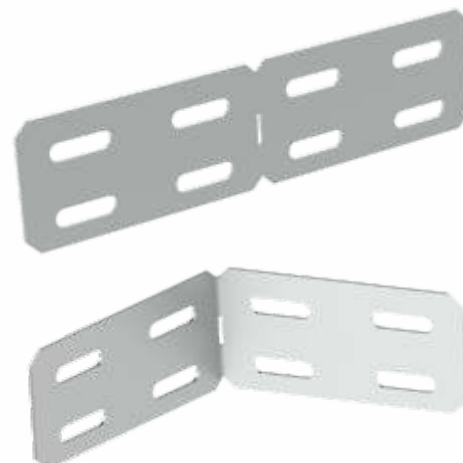
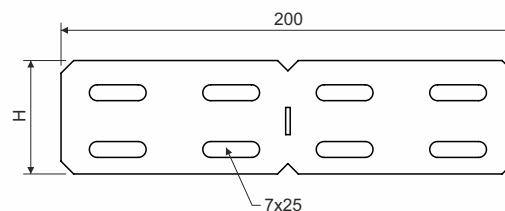


item number	height (H) (mm)	for the height of cable ladder / tray (mm)	thickness of metal trade (mm)	weight (kg/pc)	amount of bolts for connection (pcs)
<b>SSU 35_S</b> <b>SSU 35_ZM</b>	25	35	1,2	0,04	4
<b>SSU 60_S</b> <b>SSU 60_ZM</b>	50	60	1,5	0,10	4
<b>SSU 85_S</b> <b>SSU 85_ZM</b>	75	85	1,5	0,16	6
<b>SSU 110_S</b> <b>SSU 110_ZM</b>	100	110	1,5	0,20	8



product description: Angle couplings are mainly used for connecting in places of slight bends in route or to create bends with large radius or to bypass columns and pillars.  
 The advantage of the angle coupling is the possibility of creating a bend in the route at any angle easily.  
 To fix the connection use the bolt NSM 6X10. To protect the cables, the bolt head is inside the cable tray.  
 ZM surface finish joins shall be used for ZM or F surface finish trays.  
 GMT surface finish bolts shall be used for ZM or F surface finish trays.



surface finish: S - Pre-Galvanized steel according to ČSN EN 10346, ČSN EN 10143, zinc-layer 15-27 µm  
 ZM - Pre-Galvanized steel with admixture of magnesium and aluminum according to ČSN EN 10346, ČSN EN 10143, protective layer 18-31 µm (replacement of hot dip galvanizing)

sales amount: 1 pc

meets the requirements: ČSN EN 61537:02

storage: ČSN EN 60721-3-1

